

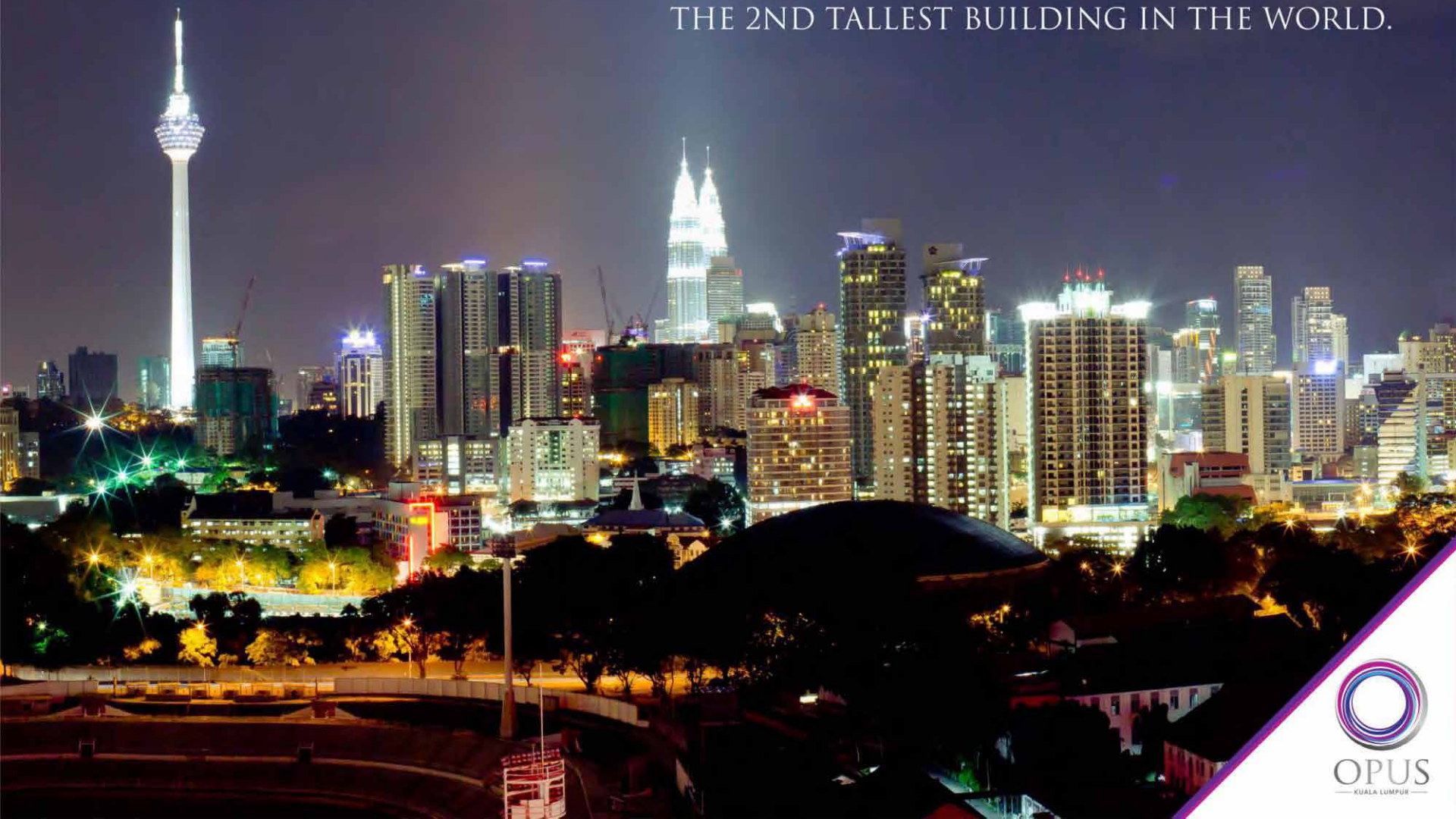


OPUS
— KUALA LUMPUR —

LUXURIOUS LIVING
IN THE HEART
OF THE CITY



OPUS IS STRATEGICALLY LOCATED OPPOSITE
THE 2ND TALLEST BUILDING IN THE WORLD.





OPUS KUALA LUMPUR





BINA PURI HOLDINGS BHD

A Leading Developer In Malaysia

With a 38-year presence within the civil and building construction industry, Bina Puri Holdings Bhd is today an integrated property player with a global influence. Upon expanding globally from Malaysia in 1995, Bina Puri now has operational offices in Brunei Darussalam, Indonesia and Thailand, contributing to the ever-growing development industry in the Asia-Pacific region.

A public listed company on the Main Board of Bursa Malaysia Bhd, the Group has the ability to handle diverse business activities and projects including, but not limited to, investment holdings, civil and building engineering management, property development and highway concessionaire.

Having reputable success in their completed projects, Bina Puri has achieved much major recognition in certifications and awards, positioning the Group as one of the top brands in the industry. With their recent success in winning the award for the BrandLaureate Best Brand in Construction 2011-2012, Bina Puri are in the right direction for continuous growth.

Completed Projects

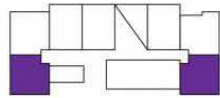
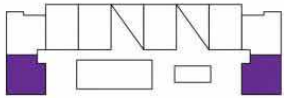
- Plaza Merdeka Commercial Complex/Hotel, Kuching, Sarawak, Malaysia. Completed in August 2012.
- Eastern Dispersal Link (EDL) Johor Bahru, Johor, Malaysia. Completed in November 2011.
- Defence Raya Golf Resort, 174 units villas, Phase VI, Defence Housing Authority (DHA), Lahore, Pakistan. Completed September 2011.
- OSP Puni Indah Residences Redevelopment of Serviced Apartments, Brunei. Completed in October 2011.
- Jesselton Condominium, Off Jalan Damai, Mile 2 3/4, Tuaran Road, Kota Kinabalu, Sabah, Malaysia.
- At-Grade Roads & South & North East Approach Bridges of Landside Road Systems for Suvarnabhumi Airport, Thailand. Completed in May 2006.



Ongoing Projects

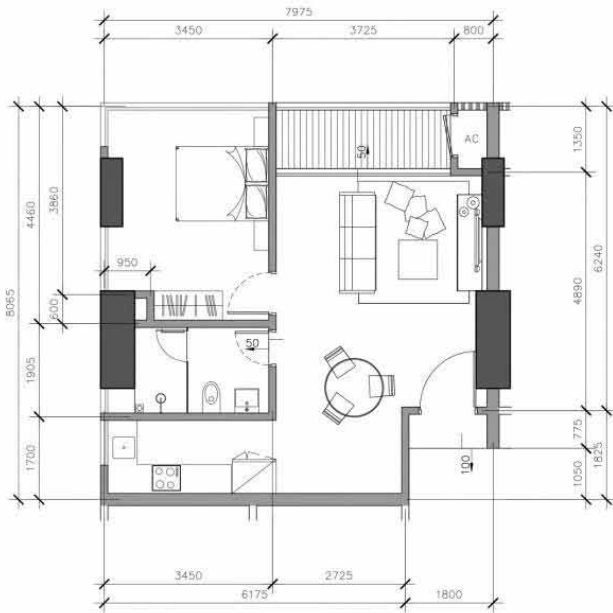
- Opus @ Kuala Lumpur, Jalan Talala, Kuala Lumpur, Malaysia. Contract value worth RM290 million.
- KLIA2, West Malaysia. Contract value worth RM997 million.
- Stormwater Pipeline Project Thureif City-Qarayay City, Saudi Arabia. Contract value worth RM25.38 million.
- Ampang (AMG) Line Extension Project, Malaysia. Contract value worth RM634 million.
- KK Times Square (Phase 2), Kota Kinabalu, Sabah. Contract value worth RM470.3 million.





KEY PLAN N.T.S.

LEVEL 9TH - 16TH FLR
18TH - 25TH FLR

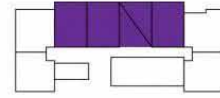
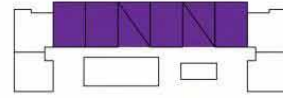


TYPE B

1 BEDROOM

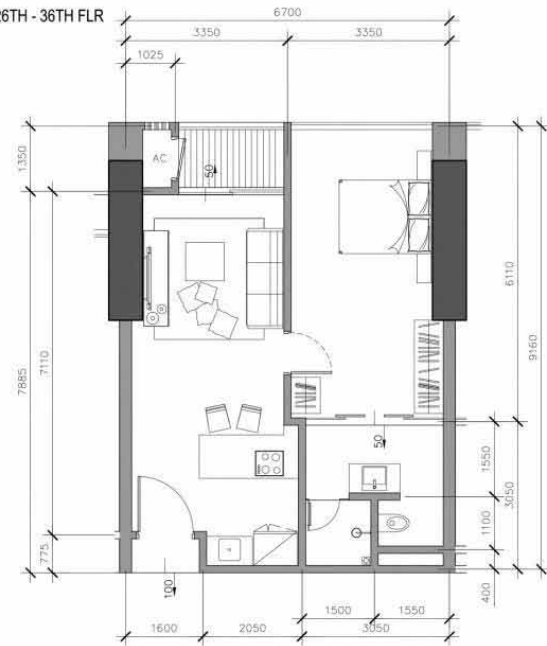
SCALE 1 : 100

61.00 SQ.M. (656 SQ.FT.)



KEY PLAN N.T.S.

LEVEL 18TH - 25TH FLR
26TH - 36TH FLR



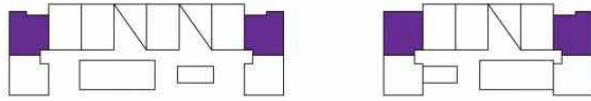
TYPE B1

1 BEDROOM

SCALE 1 : 100

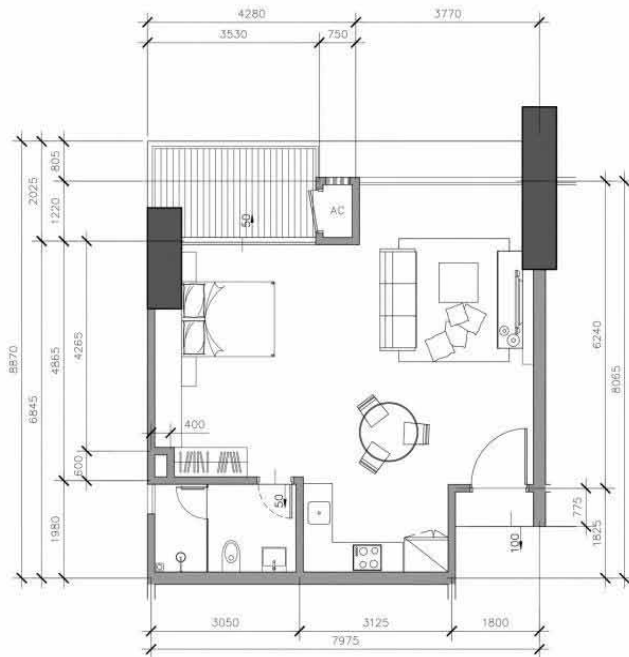
60.25 SQ.M. (648 SQ.FT.)





KEY PLAN N.T.S.

LEVEL 9TH - 16TH FLR
18TH - 25TH FLR



TYPE B2

SCALE 1 : 100

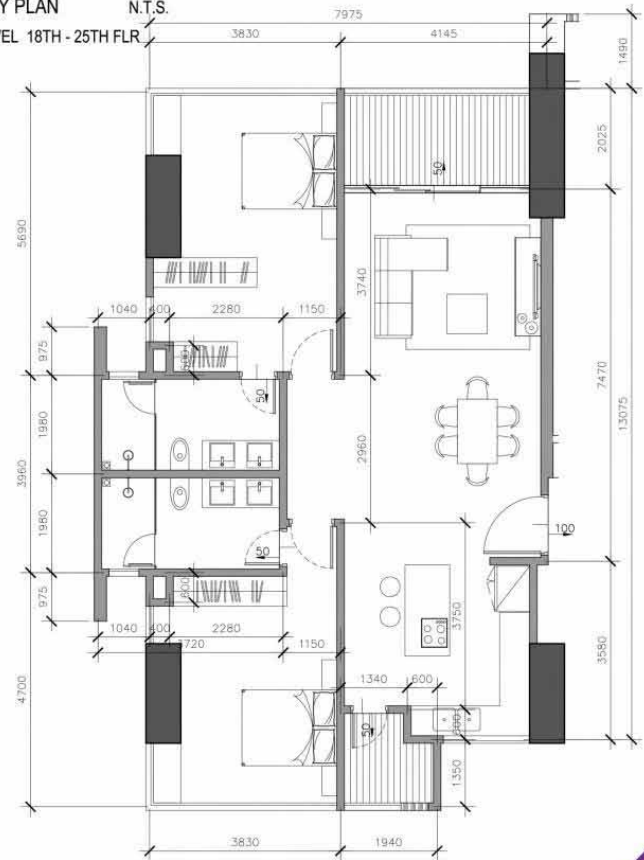
1 BEDROOM

67.55 SQ.M. (727 SQ.FT.)



KEY PLAN N.T.S.

LEVEL 18TH - 25TH FLR



TYPE C

SCALE 1 : 100

2 BEDROOMS

114.12 SQ.M. (1228 SQ.FT.)



EXCELLENT CONNECTIVITY



PRIVACY WITH ACCESSIBILITY

- 2 mins away to Maharaja Leela Monorail Station.
- 6 mins drive to China Town.
- 7 mins drive to Pavilion Kuala Lumpur.
- 9 mins drive to the Golden Triangle.



OPUS

IS STRATEGICALLY LOCATED OPPOSITE
THE 2ND TALLEST BUILDING IN THE WORLD.

